

LIZZIE CANNON

Artist portfolio

CV

Studio address: C-1-1, Bow Arts, 183 Bow Road, London. E3 2SJ.
Mobile: ++44(0)7793053875
E-mail: info@lizziecannon.com
Web site: www.lizziecannon.com

Education

2003-2006: BA Textiles (Visual Arts), Goldsmiths College
2002-2003: Foundation in Art and Design, Central Saint Martins
1998-2002: B.Sc. Geography, University of St. Andrews

Selected Exhibitions

2013

Made in Bow, Nunnery Gallery, London

2012

Graphite, GV Art, London

Dangerous Curves Ahead: Bow Arts Open Show, Bermondsey Project, London

Topographic Translation: Iteration 2, Utrophia, London

2011

Topographic Translation, The Diving School, Bristol

Into the Wild, Long White Cloud Gallery, London

Persona Art Festival, The Rag Factory, London

2010

The Freaks Exhibition, Shoreditch Town Hall, London

Traverse Tourist, Tenderproduct, London

The Truth is Rarely Pure and Never Simple, Nolia's Gallery, London

2009

Alchemy, Deptford X, London
Hogarth Brown & Lizzie Cannon, Tenderpixel, London
Behind the Scenes Event, Horniman Museum, London
The Tree House Gallery, Regents Park, London
Tales of the Electric Forest, Saint Pancras Crypt, London
999 Requiem to a bridge, Blackfriars Bridge, London, with T1 + 2/ HIVE Projects
Art of the Stitch, touring to Alexandra Palace, London;
Harrogate International Centre, Harrogate; Museum of Applied Arts, Budapest

2008

Autumn Salon, Islington Arts Factory, London
Effuse, Deptford Town Hall, London
Art of the Stitch, touring to The Deutsches Textilmuseum, Krefeld;
Birmingham Museum and Art Gallery, Birmingham
Down to Earth, Hay Gallery, Colchester
Jerwood Drawing 2007, touring to Royal West of England Academy, Bristol;
BayArt, Cardiff; Hatton Gallery, Newcastle

2007

Down to Earth, Oxford House, London
Outskirts, Brighton Festival, Brighton
Life Cycles, The Crypt, Saint Pancras crypt, London
First of Four: Orbis Opifex, The Foundry, London
Jerwood Drawing 2007, touring to Jerwood Space, London;
Pitville Gallery, Cheltenham; Mackintosh Gallery, Glasgow

2006

Textile Collective, Truman Brewery, London
Goldsmiths Textiles 2006, Goldsmiths College, London

Prizes and awards

Art of the Stitch 2009 - shortlist
Jerwood Drawing Prize 2007 - shortlist

Selected works



Untitled 1 (2011), iron pipe, wax, terracotta cast with iron, pastel, latex, varnish, 28 x 20 x 25 cm



Untitled 1 (2011), iron pipe, wax, terracotta cast with iron, pastel, latex, varnish, 28 x 20 x 25 cm



Untitled 2 (2011), iron pipe, wax, terracotta cast with iron, pastel, latex, varnish, 22 x 17 x 14 cm



Untitled 2 (2011), iron pipe, wax, terracotta cast with iron, pastel, latex, varnish, 22 x 17 x 14 cm



Untitled 3 (2011), iron pipe, wax, terracotta cast with iron, pastel, latex, varnish, 24 x 18 x 17 cm



Untitled 3 (2011), iron pipe, wax, terracotta cast with iron, pastel, latex, varnish, 24 x 18 x 17 cm



Corrosion (study with beads) (2013), found object, beads, embroidery, silk, 23 x 23 x 3 cm



Detail: Corrosion (study with beads) (2013), found object, beads, embroidery, silk, 23 x 23 x 3 cm



Reverse view: Corrosion (study with beads) (2013), found object, beads, embroidery, silk, 23 x 23 x 3 cm



Untitled 2 (2013), porcelain body paper clay, copper pipes, copper filler, plaster, bees wax, 22 x 13 x 17 cm



Untitled 1 (2013), porcelain body paper clay, copper pipes, copper filler, plaster, bees wax, 17 x 17 x 17 cm



Untitled 3 (2013), porcelain body paper clay, copper pipe, copper filler, plaster, tea, bees wax, 21 x 18 x 17 cm



Mended leaf [*Fatsia japonica*] (2012), leaf darned with polyester thread, 43 x 40 cm



Mended leaf [Hosta] (2012), leaf darned with polyester thread, 50 x 25 cm



Mended leaf [*Fallopia japonica*] (2012), leaf darned with polyester thread 9.5 x 8 cm



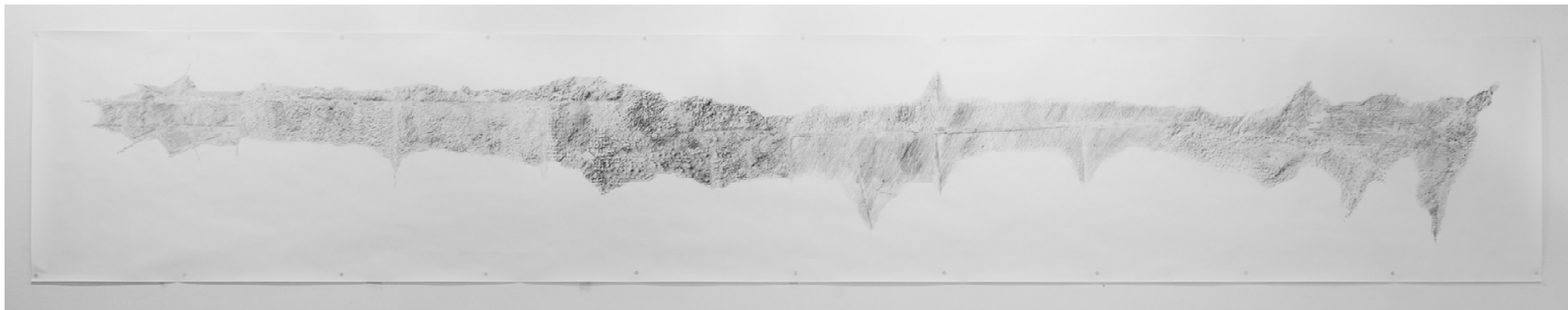
Mended leaf [*Pulmonaria*] (2010), leaf darned with polyester thread, 9.5 x 4 cm



Mended leaf (2009), leaf darned with polyester thread, 5 x 6 cm



Mended leaf [Bergenia] 2 (2011), leaf darned with polyester thread, 6.5 x 4.5 cm



Interstitial Growth (2011), pavement rubbing, pencil drawing, embroidery, 610 x 100 cm



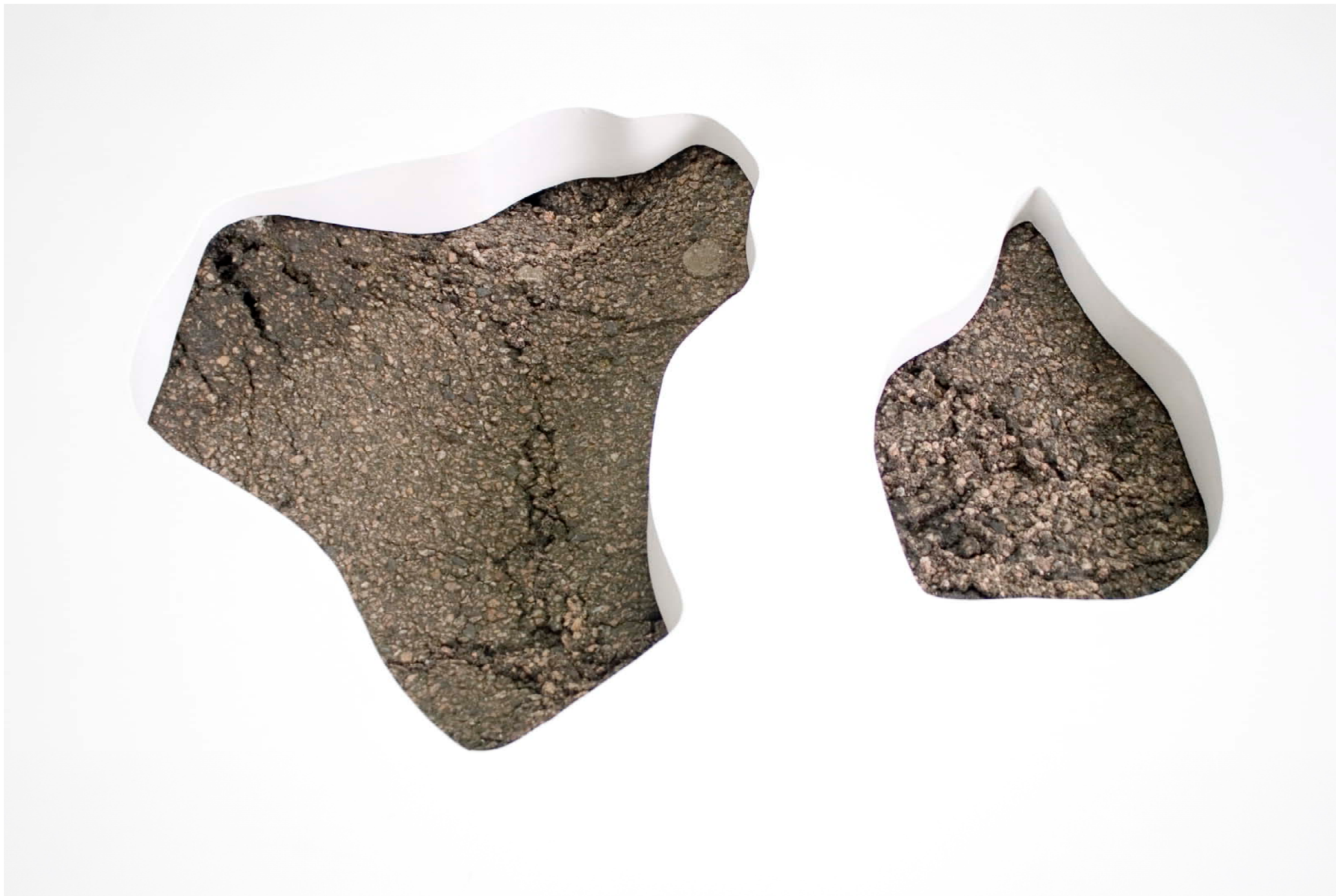
Detail: Interstitial Growth (2011), pavement rubbing, pencil drawing, embroidery, 610 x 100 cm



Detail of embroidery: Interstitial Growth (2011), pavement rubbing, pencil drawing, embroidery, 610 x 100 cm



Barriedale (2012), found tarmac, embroidery, painted wood, 96 x 85 x 19 cm



Detail: Barriedale (2012), found tarmac, embroidery, painted wood, 96 x 85 x 19 cm



Detail of embroidery: Barriedale (2012), found tarmac, embroidery, painted wood, 96 x 85 x 19 cm



Installation view: Untitled Plants (2006), velvet, tarmac, latex, silk, dimensions variable (approx. 100 x 150 x 150 cm max)



Detail: Untitled Plants (2006), velvet, tarmac, latex, silk, dimensions variable (approx. 100 x 150 x 150 cm max)



Untitled Plants (2006), velvet, tarmac, latex, silk, dimensions variable (approx. 100 x 150 x 150 cm max)



Subterranean Craterellus (2010), fake fur, tarmac, bitumin, velvet, latex, plastic pipe, wax, pedestal, 110 x 45 x 45 cm



Detail: Subterranean Craterellus (2010), fake fur, tarmac, bitumin, velvet, latex, plastic pipe, wax, pedestal, 110 x 45 x 45 cm



Detail: Subterranean Craterellus (2010), fake fur, tarmac, bitumin, velvet, latex, plastic pipe, wax, pedestal, 110 x 45 x 45 cm



Concreus Palibracchius (2009), velour, fleece, concrete, latex, needles, reconstructed bag, dimensions variable (approx. 200 x 100 x 100 cm)



Detail: Concreus Palibracchius (2009), velour, fleece, concrete, latex, needles, reconstructed bag, dimensions variable (approx. 200 x 100 x 100 cm)



Detail: Concreus Palibracchius (2009), velour, fleece, concrete, latex, needles, reconstructed bag, dimensions variable (approx. 200 x 100 x 100 cm)



Installation view: *Concreus Palibracchius* (2009), concrete, latex, needles, reconstructed bag, dimensions variable (approx. 200 x 100 x 100 cm)



Installation view: *Concreus Palibracchius* (2009), velour, fleece, concrete, latex, needles, reconstructed bag, dimensions variable (approx. 200 x 100 x 100 cm)



Corpus Bulbaceous 1&2 (2010), fleece, velour, concrete, latex, silk, merino tops, resin, 35 x 45 x 90 cm & 30 x 55 x 90 cm



Corpus Bulbaceous 1 (2010), fleece, velour, concrete, latex, 30 x 55 x 90 cm



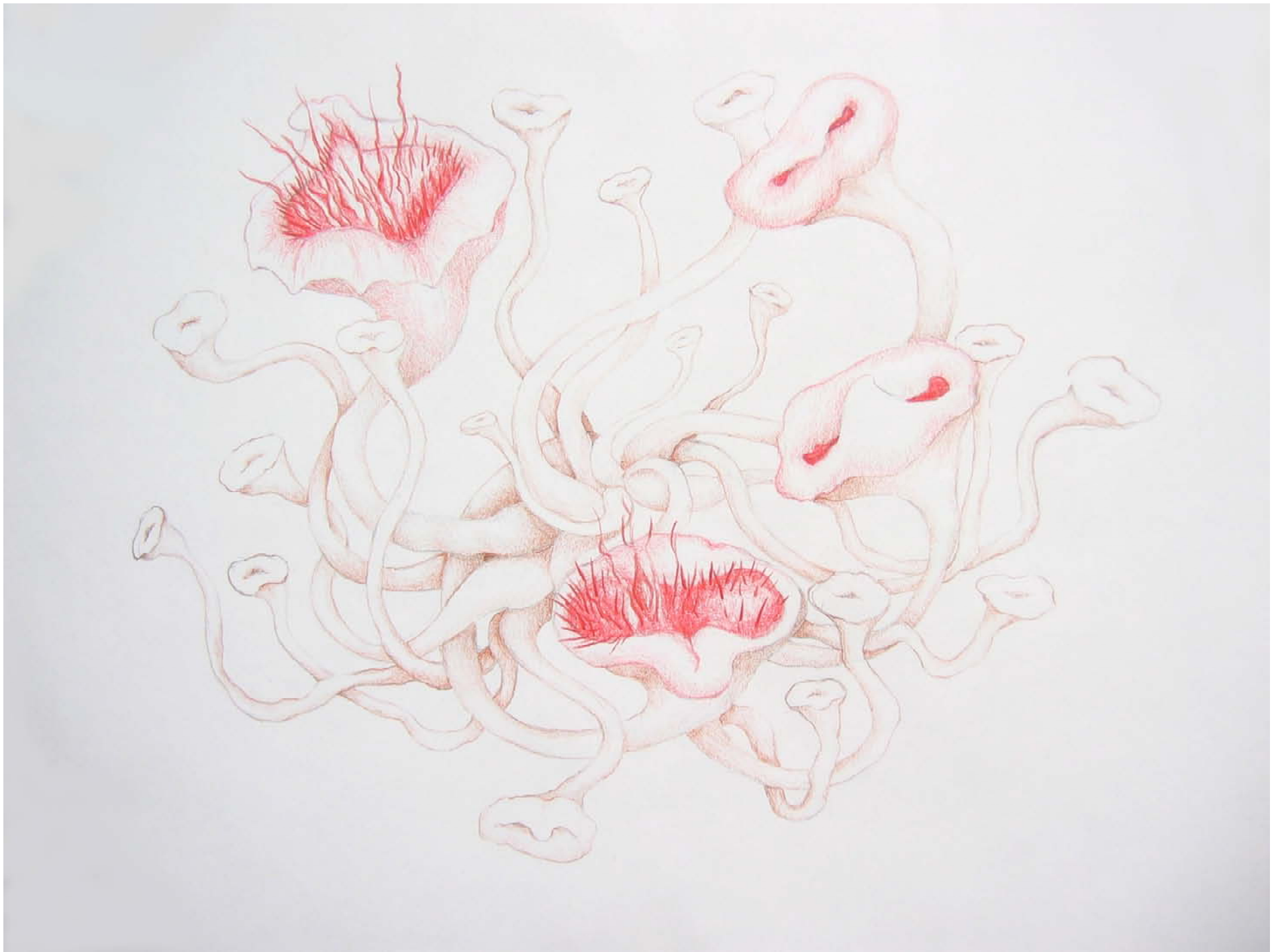
Detail: Corpus Bulbaceous 2 (2010), fleece, velour, concrete, latex, silk, merino tops, resin, 30 x 55 x 90 cm



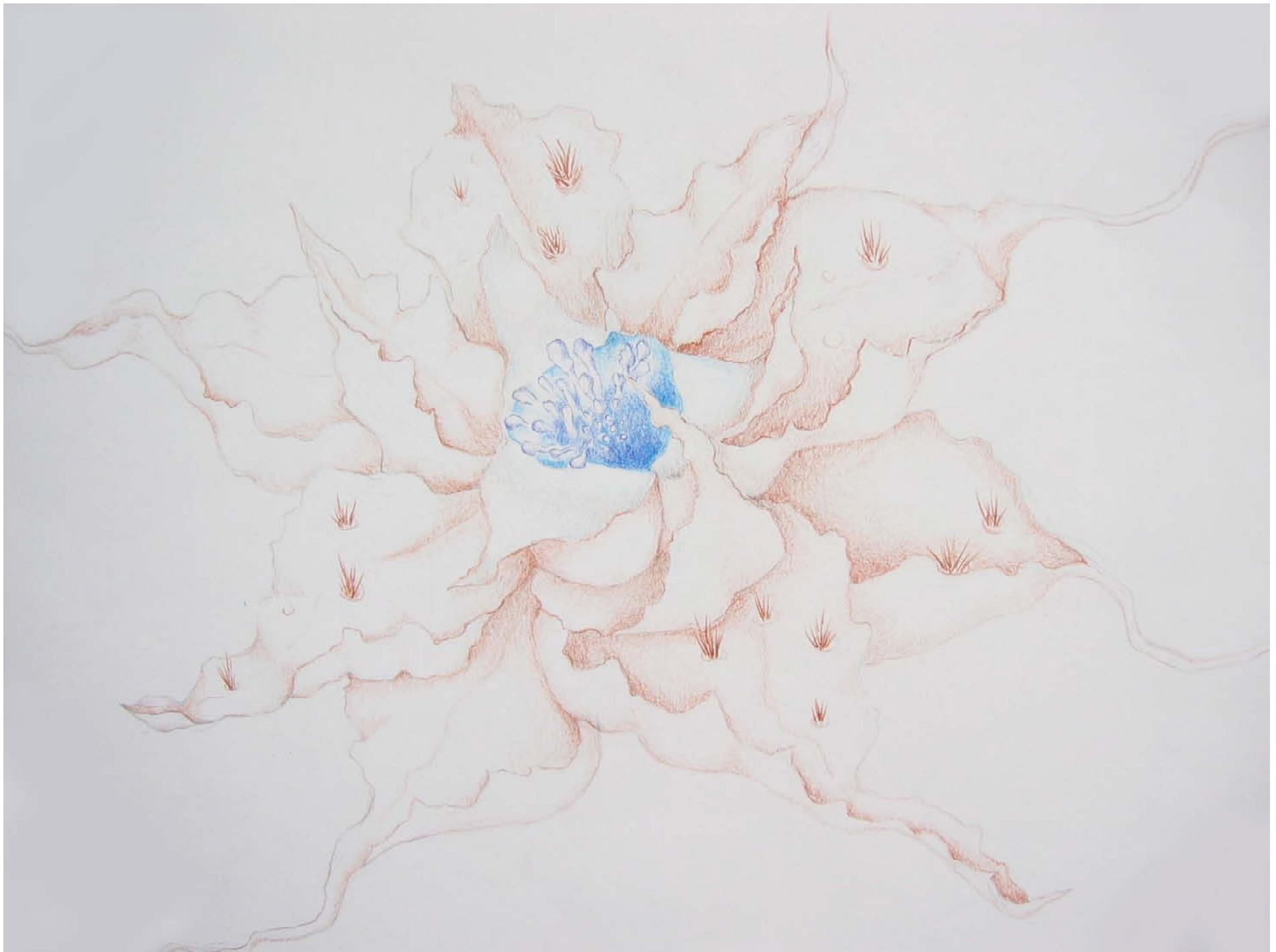
Weeds are just plants in the wrong place 1 (2004), coloured pencil on paper, 31 x 42 cm



Weeds are just plants in the wrong place 2 (2004), coloured pencil on paper, 31 x 42 cm



Weeds are just plants in the wrong place 3 (2004), coloured pencil on paper, 31 x 42 cm



Weeds are just plants in the wrong place 4 (2004), coloured pencil on paper, 31 x 42 cm

For further information please contact:

Lizzie Cannon

Studio C1-1
Bow Arts
183 Bow Road
E32SJ

E-mail: info@lizziecannon.com

www.lizziecannon.com